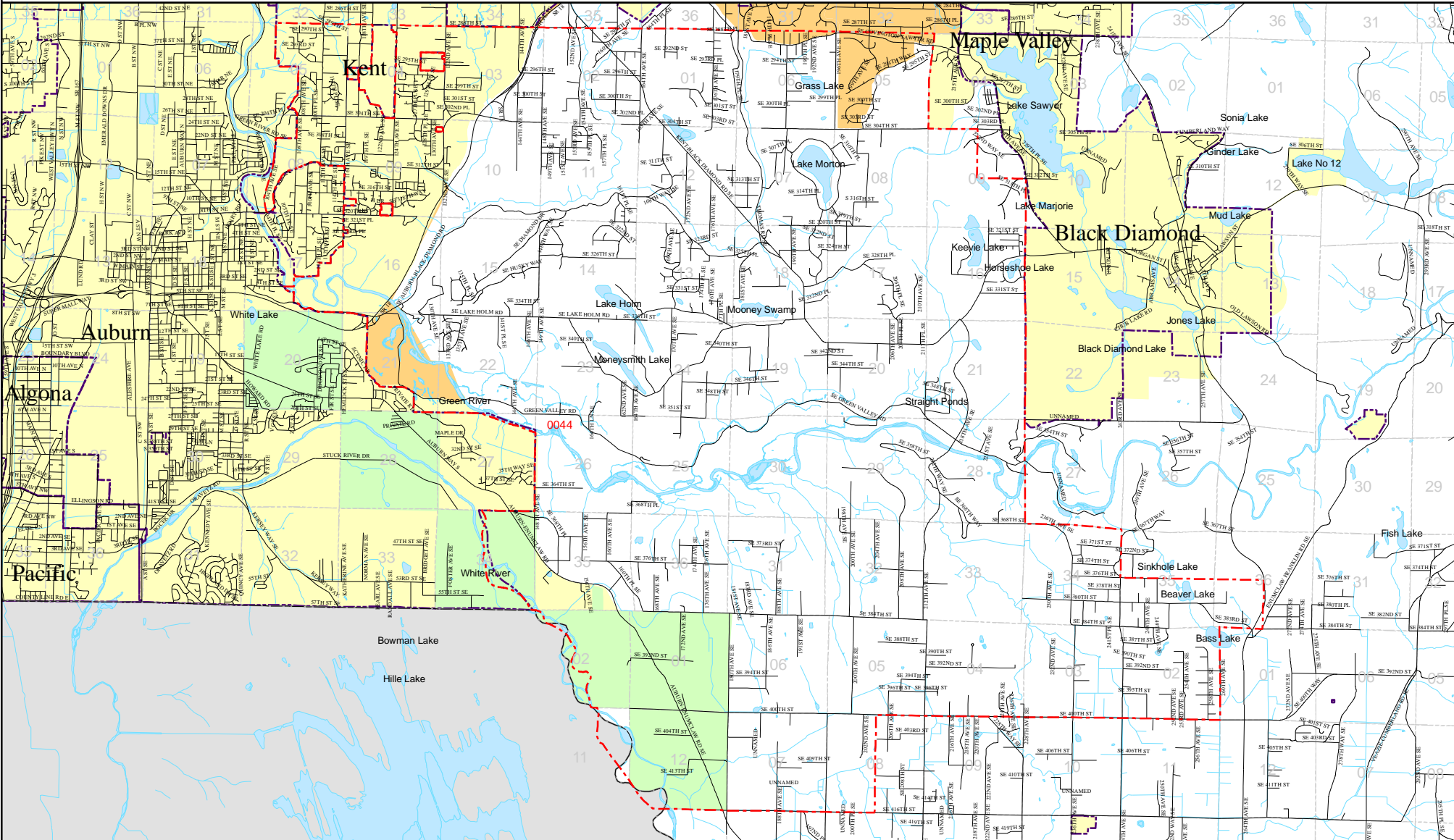


# Fire District 44



## King County Prohibited Outdoor Burning Areas

- |  |   |   |                  |   |                         |
|--|---|---|------------------|---|-------------------------|
|  | Residential & Land Clearing Burning Prohibited      |  | Fire District    |   | Major Road              |
|  | Land Clearing Burning Prohibited**                  |  | City Limits      |   | River/Stream            |
|  | Land Clearing Burning Prohibited after 12/31/2006** |  | County           |   | Miles                   |
|  | Reservation   |  | Township Section |  | Absolute Scale 1:90,000 |
|  | Water Bodies  |   |                  |   |                         |

\* Includes: Regulatory designated "no burn areas" (incorporated cities, urban growth areas (UGA), carbon monoxide (CO) nonattainment areas, & particulate matter (PM10) nonattainment areas) and "no burn areas" identified by the Fire and Rescue Department.

\*\* Includes: Regulatory designated areas (high density areas (HDA)) and areas identified by the Fire and Rescue Department

